



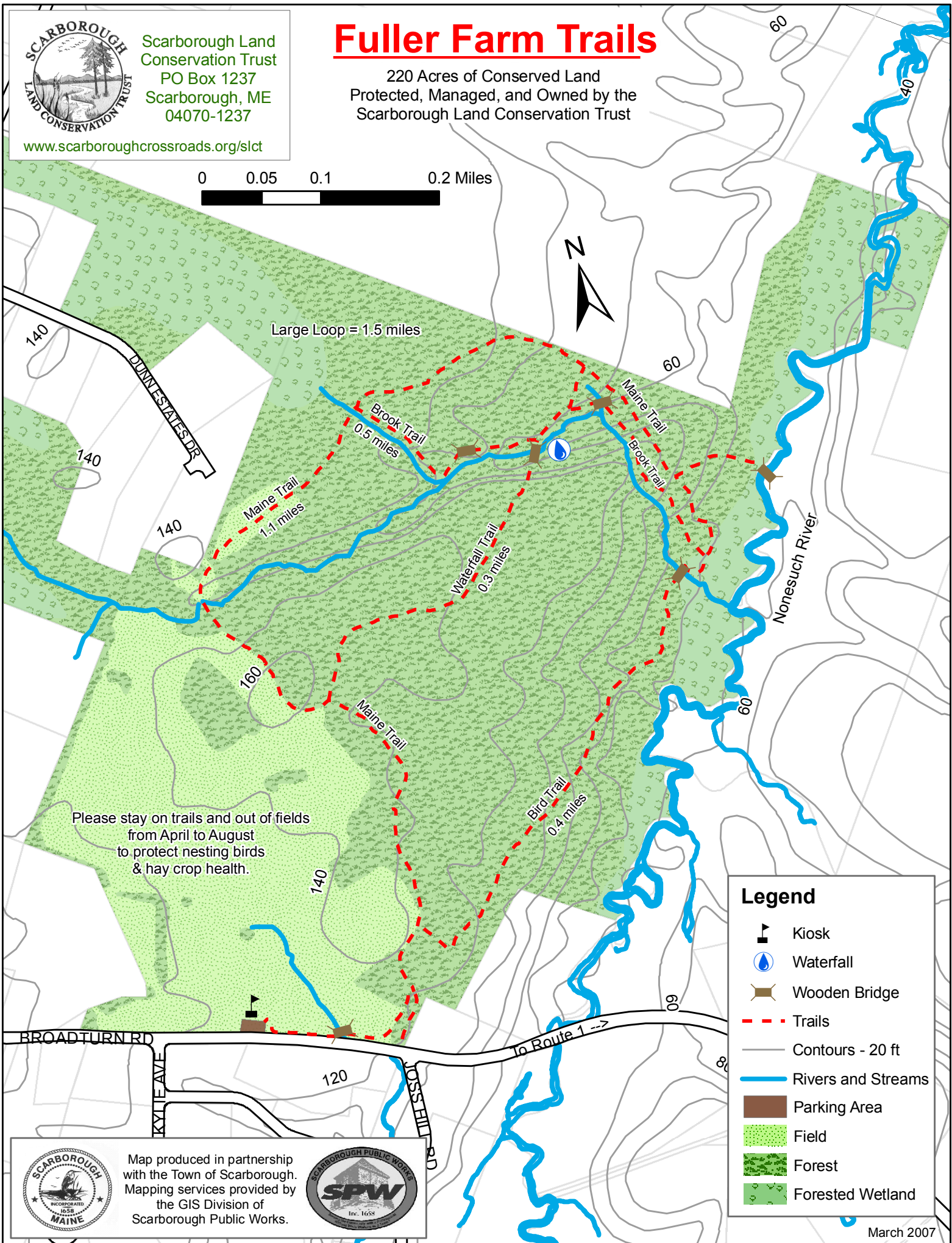
Scarborough Land Conservation Trust  
 PO Box 1237  
 Scarborough, ME  
 04070-1237

[www.scarboroughcrossroads.org/slct](http://www.scarboroughcrossroads.org/slct)

# Fuller Farm Trails

220 Acres of Conserved Land  
 Protected, Managed, and Owned by the  
 Scarborough Land Conservation Trust

0 0.05 0.1 0.2 Miles



Large Loop = 1.5 miles

Brook Trail  
0.5 miles

Maine Trail  
1.1 miles

Waterfall Trail  
0.3 miles

Bird Trail  
0.4 miles

Nonesuch River

Please stay on trails and out of fields  
 from April to August  
 to protect nesting birds  
 & hay crop health.

## Legend

- Kiosk
- Waterfall
- Wooden Bridge
- Trails
- Contours - 20 ft
- Rivers and Streams
- Parking Area
- Field
- Forest
- Forested Wetland



Map produced in partnership  
 with the Town of Scarborough.  
 Mapping services provided by  
 the GIS Division of  
 Scarborough Public Works.



March 2007